



IFSC CLIMBING WORLD CUP

2021

IFSC CLIMBING WORLD CUP

LEAD

BRIANCON

FRANCE

17-18 JULY 2021

ORGANISED BY:



&



Event Organiser's Partners

IFSC Partners





TABLE OF CONTENT

1. ORGANISATION	2
2. IFSC OFFICIALS	2
3. REGISTRATION	3
4. PRE-EVENT REGULATIONS	3
5. CONFIRMATION OF ATTENDANCE (as per the Addendum to IFSC Rules)	3
6. VISA AND TRAVEL	1
7. HOW TO GET TO BRIANCON	1
8. ACCOMMODATION	1
9. COMPETITION VENUE	1
10. HEALTHCARE SYSTEM INFORMATION	3
11. RESPONSE PROTOCOL IN CASE OF POSITIVE RAPID TEST OR SUSPECTED CASE OF COVID-19	3
12. PROVISIONAL PROGRAMME (LOCAL TIME, UTC+2)	4
APPENDIX I: TRAVEL INFORMATION	5



1. ORGANISATION

Organiser: French Federation of Sport Climbing and Internationaux of Briançon Serre-Chevalier Association

Organiser Website: www.mondial-escalade.fr

Contacts Local Organiser

General Management: Laurence DORDOR – Franck PRIGENT / direction@mondial-escalade.com

Vincent CAUSSÉ / v.causse@ffme.fr

Competition Management:

Vincent CAUSSÉ / v.causse@ffme.fr

Broadcasting:

Florent KUNCKLER / f.kunckler@ffme.com

Media, Sponsoring & Communications:

Franck PRIGENT / direction@mondial-escalade.fr

Florent KUNCKLER / f.kunckler@ffme.com

Covid-19 Delegate:

Émilie GHEUX / e.gheux@ffme.fr / +336 81 77 82 26

Contact National Federation:

Vincent CAUSSÉ / v.causse@ffm.fr / +336 87 33 71 59

2. IFSC OFFICIALS

Technical Delegate: Fabrizio MINNINO (ITA) fabrizio.minnino@ifsc-climbing.org +39 3388622410

Jury President: Matevz GRADISEK (SLO)

Judge: Artur POLANSKI (POL)

Chief Routesetter Lead: Martin HAMMERER (AUT)

Routesetters Lead: Anna GALLYAMOVA (RUS), Alberto GNERRO (ITA)



3. REGISTRATION

Licenses: Only competitors and team officials with a valid IFSC international license are allowed to register for the competition.

IFSC Online Registration System: <https://ifsc.results.info/users/login>

Pre-registration: In order to support the efficient organisation of the competitions, it is very important that National Federations register participants to the competitions as early as possible.

Deadline: The deadline for registration is 15 days before the first day of competition (the "Registration Date") on **2 July 2021 at 11:59 PM UTC+0**.

Online Technical Meeting: (as per the Addendum to IFSC Rules)

A representative from each participating Member Federation shall participate to the online Technical meeting lead by the IFSC Technical Delegate.

Date: 6 July 2021

Time: 2:00 PM (UTC+2)

Link: [here](#)

4. PRE-EVENT REGULATIONS

All athletes and team officials are recommended to have insurance coverage, covering hospitalization and all other medical coverage if required due to COVID-19 and possible repatriation back to their home country.

The IFSC will not be responsible for any of these costs.

5. CONFIRMATION OF ATTENDANCE (as per the Addendum to IFSC Rules)

Participation of all Team Members shall be confirmed upon arrival to location to the IFSC Technical Delegate by phone or via email in the 24 hours period between **14 July at 11:59 PM (UTC +2) and 15 July at 11:59 PM (UTC+2)**.

Technical Delegate : Fabrizio Minnino / +393 388 622 410 / fabrizio.minnino@ifsc-climbing.org

Delayed Arrival

In case of late arrival please contact the IFSC Technical Delegate as soon as possible.

Technical Meeting

Technical Meeting will be organized on **July 16 at 6:00 PM (UTC+2:00)** where only 1 (one) Team Official per team will be allowed.



COVID- testing

All participating athletes, team officials and staff must comply with one of the following conditions:

1. Vaccination
 - a) Since more than 14 days after administration of a second dose of Pfizer/BioNTech or Moderna or AstraZeneca
 - b) Since more than 28 days after administration of a dose of Johnson & Johnson
 2. Negative PCR or antigenic test taken no more than 72 hours prior to the first day of competition.
- In both cases, all participant shall send the certificate to proof their vaccination or negative test to covid-competition@ffme.fr upon arrival/registration at the event.

6. VISA AND TRAVEL

Visa:

If you need invitations for visa, please fill the form at the following address : <http://www.ffme.fr/visa>

Please check the APPENDIX I on how to enter in France.

7. HOW TO GET TO BRIANCON

www.serre-chevalier.com/en/resort/mobility-and-transport/getting-here

8. ACCOMMODATION

www.cippa.com/

www.serre-chevalier.com/en

www.hotel-vauban-briancon.com

www.hotel-saint-antoine-briancon.fr/fr/

www.soleilvacances.com/hotel/parc-hotel-briancon

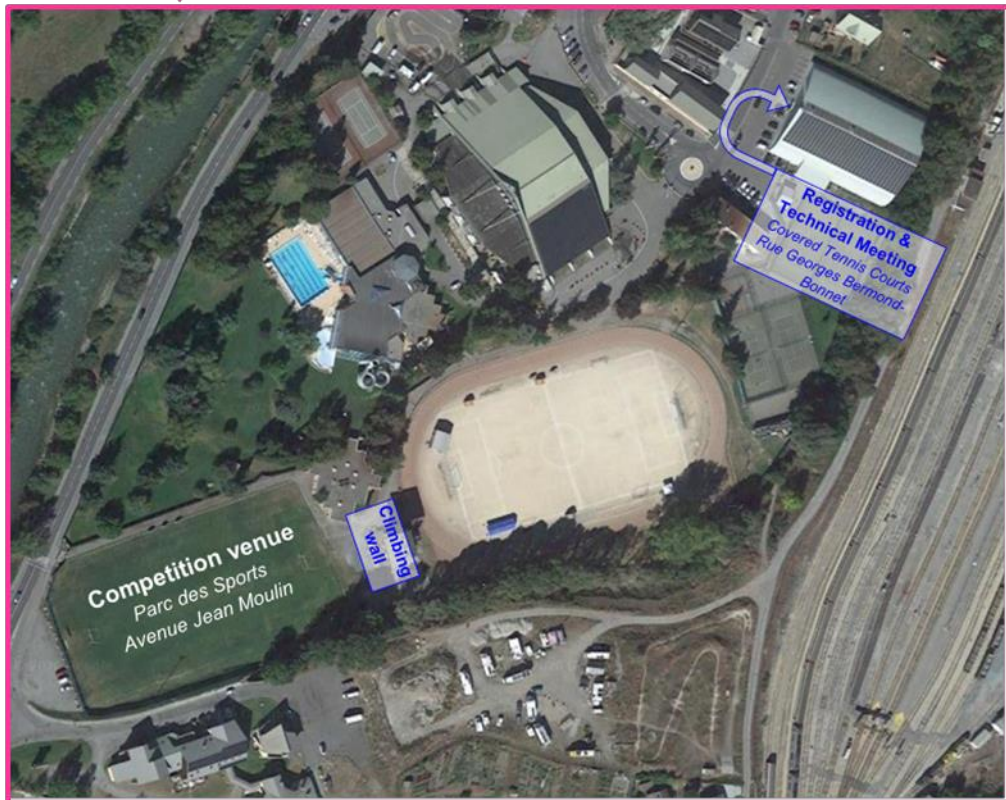
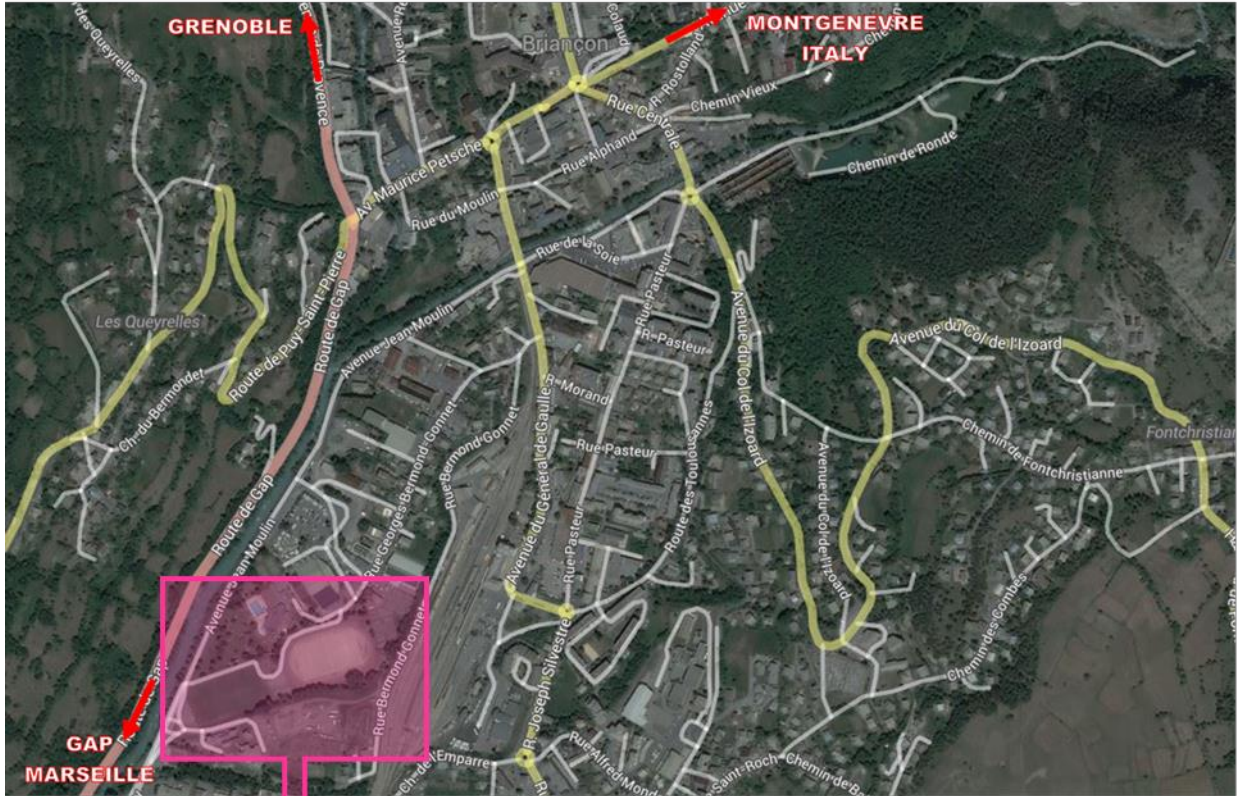
COMPETITION VENUE

Competition is held outside: **PARC DES SPORTS** – avenue Jean Moulin 05 100 Briançon

Isolation/warming zone : **Covered tennis courts** - 36 Rue Georges Bermond-Gonnet, 05100 Briançon



IFSC CLIMBING WORLD CUP



Event Organiser's Partners

IFSC Partners





9. HEALTHCARE SYSTEM INFORMATION

COVID-19 Outbreak Response Coordinator Doctor: TBC

Emergency local doctor during the event: TBC

Local healthcare information:

- Emergency medical service: phone number 15
- Euro-Emergency-Call: phone number 112
- Hospital: phone number +334 92 25 25 25

10. RESPONSE PROTOCOL IN CASE OF POSITIVE RAPID TEST OR SUSPECTED

CASE OF COVID-19

If I am feeling ill

If you have a cough or a temperature, stay at the hotel, avoid contact with others and call the COVID-19 Outbreak Response Coordinator Doctor.

You should take a test as quickly as possible.

If you have the virus, you must self-isolate for seven days from the first symptoms. If you still have a temperature, you must self-isolate for a further 48 hours.

If you have a cough and/or a temperature, and you have difficulty breathing and/or you are feeling faint, dial 15 or call or send a text to 114 if you have a speech or hearing impairment.

If I have the virus

If you have the virus, you must self-isolate for seven days from the first symptoms. If you still have a temperature, you must self-isolate for a further 48 hours.

If you have the virus but no symptoms, you must self-isolate for seven days from the time you took the test.

If I have been notified that I am a contact case

You must self-isolate for 7 days from the last time you were in contact with the person who has the virus. At the end of that time, you should take a test. If you live with the person who has the virus, you should take a test immediately. Contact a test centre to make an appointment.

After the test, go straight home and self-isolate until you have the result.

In any case (symptoms or positive test) the team manager has to inform immediately the COVID-19 Outbreak Response Coordinator Doctor and the Technical Delegate.

The person suspected must be immediately placed in a separate room and kept away from the event.

11. PROVISIONAL PROGRAMME (LOCAL TIME, UTC+2:00)

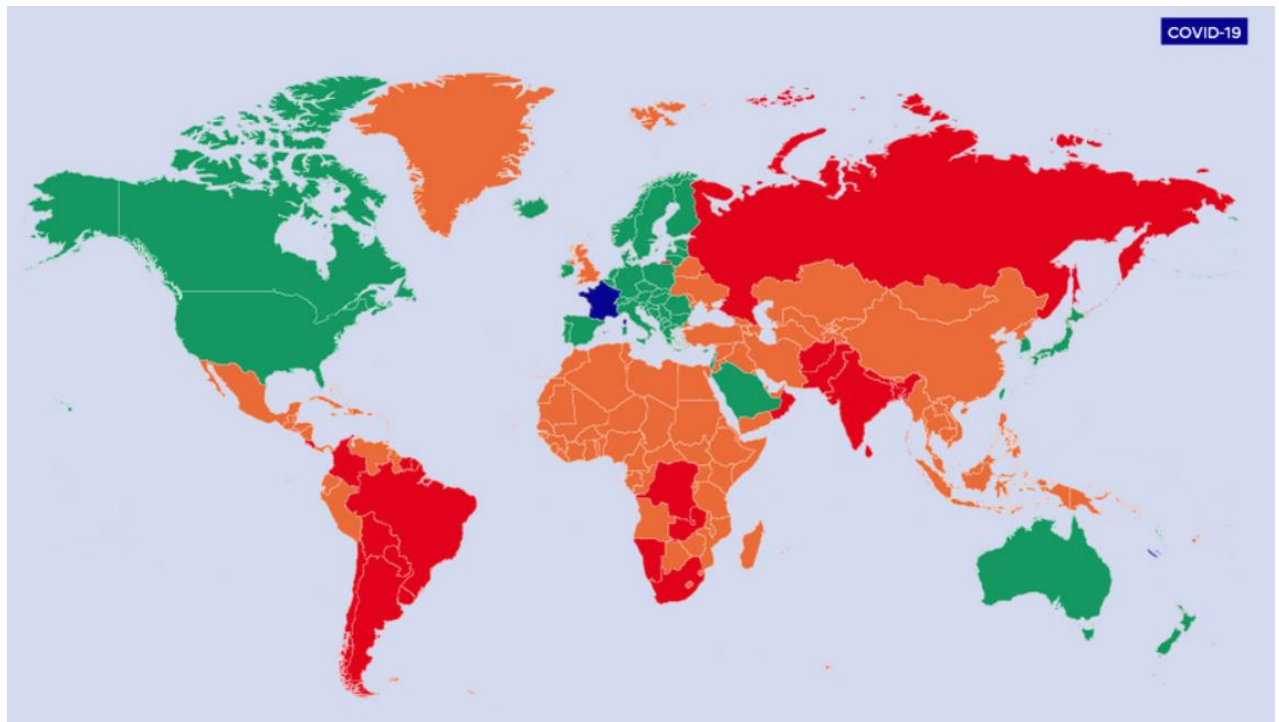
Tuesday 6 July		
	2:00 PM	Online Technical Meeting
Friday 16 July		
	3:00 PM – 5:00 PM	Registration IFSC World Cup Lead
	6:00 PM	Technical Meeting LEAD
Saturday 17 July		
	9:00 AM – 4:00 PM	Men’s and Women’s Lead Qualifications
	5:00 PM	Men’s and Women’s Lead semi-finals isolation Zone opens
	6:30 PM	Men’s and Women’s Lead semi-finals isolation Zone closes
	7:00 PM	Observation Men
	7:10 PM	Observation Women
	7:30 PM – 10:00 PM	Men’s and Women’s Lead semi-finals
Sunday 18 July		
	5.30 pm	Women’s and Men’s Lead finals isolation Zone opens
	6.30 AM	Women’s and Men’s Lead semi-finals isolation closes
	7.30 PM	Athletes Presentation and observation time followed by Men’s Lead final
	8.30 PM	Women’s Lead Final
	Followed by	Awarding Ceremony

APPENDIX I: TRAVEL INFORMATION

Procedures on how to enter in France (as of July 8th 2021)

Important link for information on traveling to France:

<https://www.interieur.gouv.fr/Actualites/L-actu-du-Ministere/Certificate-of-international-travel#from6>



From a GREEN list country

European area countries, plus Albania, Australia, Bosnia, Canada, Hong-Kong, Israel, Japan, Kosovo, Lebanon, Montenegro, New Zealand, North Macedonia, Saudi Arabia, Serbia, Singapore, South Korea, Taiwan, the United States and Vanuatu.

Mobility rules and regulations

No restrictions shall apply when entering metropolitan France from a green list country or territory.

Health control measures

If you are already vaccinated, you must present proof of vaccination status and a sworn statement attesting to the absence of symptoms of covid-19 infection and contact with a confirmed case of covid-19.

If you are not vaccinated, you must present the transport company and border control authorities with a negative PCR or antigenic test no more than 72 hours prior to departure (departure of first flight in case of connecting flights). Children aged below eleven years are exempt from testing. You must also present a



sworn statement attesting to the absence of symptoms of covid-19 infection and contact with a confirmed case of covid-19.

You can upload the sword statement from the link at the top of the page.

From an AMBER list country

Mobility rules and regulations

If you are already vaccinated, no restrictions shall apply when entering metropolitan France.

If you are not vaccinated, you must give a compelling reason to be allowed to enter metropolitan France. The tentative list of compelling reasons features on the certificate of entry into metropolitan France that can be downloaded below.

Health control measures

All travellers arriving from an amber list country must present the transport company and border control authorities with a negative PCR test less than 72 hours prior to departure (first flight departure in case of connecting travel) or a negative antigen test less than 48 hours prior to departure (first flight departure in case of connecting flight). Children aged below eleven years are exempt from testing.

Vaccinated travellers must also provide:

- A sworn statement certifying the absence of COVID-19 symptoms and of any contact with a confirmed case of COVID-19;
- Proof of their vaccination status.

Unvaccinated travellers must also provide:

- A sworn statement certifying the absence of COVID-19 symptoms and of any contact with a confirmed case of COVID-19;
- A sworn undertaking to take an antigen test or biological examination on arrival in metropolitan France;
- A sworn undertaking to self-isolate for seven days, and another sworn undertaking to take a biological virological screening test (PCR) at the end of the isolation period.

You can upload the sword statements from the link at the top of the page.

From an RED list country

Mobility rules and regulations

Only travellers with a compelling reason shall be allowed to enter metropolitan France. The tentative list of compelling reasons features on the certificate of entry into metropolitan France that can be downloaded below.



Health control measures

All travellers arriving from a red list country must present the transport company and border control authorities with a negative PCR or antigenic test no more than 48 hours prior to departure (departure of first flight in case of connecting flights). Children aged below eleven years are exempt from testing.

Vaccinated travellers must also provide:

- A sworn statement certifying the absence of COVID-19 symptoms and of any contact with a confirmed case of COVID-19;
- A sworn undertaking to take an antigen test or biological examination on arrival in metropolitan France;
- Proof of their vaccination status;
- A sworn undertaking to self-isolate for seven days, and another sworn undertaking to take a biological virological screening test (PCR) at the end of the isolation period.

Unvaccinated travellers will be systematically quarantined or isolated by prefectural order on arrival in metropolitan France, for a period of ten days with restrictions on the time they can leave the isolation facility (except in case of transit in an international zone).

They must also provide:

- A sworn statement certifying the absence of COVID-19 symptoms and of any contact with a confirmed case of COVID-19;
- A sworn undertaking to take an antigen test or biological examination on arrival in metropolitan France;
- Proof of home address or proper accommodation (hotel or equivalent), specifying, where applicable, how control officers can gain access to confirm compliance with the quarantine or isolation measures, except in cases of isolation in an accommodation facility provided by the administration (territorial isolation support units have been set up to assist isolated persons) or of transit in an international zone.

You can upload the sword statements from the link at the top of the page.

About vaccination

Only those four vaccines are recognize in France, following the rule of the European Medicines Agency :

- Pfizer
- or Astrazenca
- or Jonhson & Jonhson
- or Moderna

Details: <https://www.ema.europa.eu/en/human-regulatory/overview/public-health-threats/coronavirus-disease-covid-19/treatments-vaccines/vaccines-covid-19/covid-19-vaccines-authorized#authorized-covid-19-vaccines-section>

Your vaccination is considered as valid:

- 14 days after the second dose of Pfizer, Astrazeneca and Moderna
- 28 days after the single dose of Jonhson&Johnson
- 14 days after the single dose for people who have already been infected by the covid19.