



INTERNATIONAL FEDERATION OF SPORT CLIMBING

VERSION 1.3  
26 AUGUST

# 2025 IFSC CLIMBING AND PARA CLIMBING WORLD CHAMPIONSHIPS BOULDER, LEAD, SPEED

## SEOUL

## SOUTH KOREA

## 20-28 SEPTEMBER 2025

ORGANISED BY:



Event Partners

IFSC Partners





# INTERNATIONAL FEDERATION OF SPORT CLIMBING

## Table of Contents

1.	ORGANISATION .....	3
1.1.	IFSC Staff .....	3
1.2.	IFSC Officials .....	3
1.3.	Local Organising Committee .....	3
2.	REGISTRATION DEADLINE .....	4
3.	VALID ATHLETES INTERNATIONAL LICENCE .....	5
4.	VISA AND TRAVEL .....	5
5.	COMPETITION VENUE .....	6
6.	WALLS PROFILES .....	7
6.1.	Lead wall – same profile for the outdoor and indoor wall.....	7
6.2.	Boulder wall – outdoor (Qualifications).....	7
6.3.	Boulder wall – indoor (Semi-Finals and Finals) .....	7
7.	TRAINING POSSIBILITIES .....	8
8.	HEALTHCARE INFORMATION .....	8
9.	PHYSICAL IMPAIRMENT CLASSIFICATION .....	9
10.	TECHNICAL MEETING.....	10
11.	CONFIRMATION OF ATTENDANCE.....	10
12.	PROVISIONAL PROGRAMME (LOCAL TIME, UTC +9) .....	11
13.	CONTINGENCY PLANS .....	13
14.	ADDITIONAL PROGRAMME ACTIVITIES .....	13
14.1.	Anti-Doping Seminar .....	13
14.2.	Athletes' Forum.....	13
14.3.	IFSC World Cups awards .....	13
15.	PRIZE MONEY .....	14
17.	ACCOMMODATION .....	15
17.1.	Suggested hotels .....	15
17.2.	Seoul Olympic Parktel – SOLD OUT .....	15
17.3.	Hotel Samjung.....	15
18.	TRANSPORT .....	15
19.	TRAVEL INFORMATION .....	15
19.1.	By Bus .....	15
19.2.	By Subway.....	15
20.	ADDITIONAL RANKING INFORMATION.....	15



## 1. ORGANISATION

### 1.1. IFSC Staff

Event		
Sport Operations Manager	Alessandro Di Cato	<a href="mailto:alessandro.dicato@ifsc-climbing.org">alessandro.dicato@ifsc-climbing.org</a> +39 392 6478304
Sport Operations Manager	Haesol Han	<a href="mailto:hazel.han@ifsc-climbing.org">hazel.han@ifsc-climbing.org</a> +39 333 3266309
Media and Communications		
Media and Communications Director	Fabrizio Rossini	<a href="mailto:fabrizio.rossini@ifsc-climbing.org">fabrizio.rossini@ifsc-climbing.org</a> +39 348 8284387
Media Manager	Richard Aspland	<a href="mailto:richard.aspland@ifsc-climbing.org">richard.aspland@ifsc-climbing.org</a> +39 331 1336432
Digital Manager	Marco Vettoretti	<a href="mailto:marco.vettoretti@ifsc-climbing.org">marco.vettoretti@ifsc-climbing.org</a> +39 371 4155701
Institutional and Para Climbing		
Head of General Affairs	Erica Ricci	<a href="mailto:erica.ricci@ifsc-climbing.org">erica.ricci@ifsc-climbing.org</a> +39 333 3266305

### 1.2. IFSC Officials

Event Delegate	Sebastian Powell (CAN)	<a href="mailto:sebastian.powell@ifsc-climbing.org">sebastian.powell@ifsc-climbing.org</a> +1 5872848801
Medical Delegate	Naama Constantini (ISR)	<a href="mailto:naamacons@gmail.com">naamacons@gmail.com</a>
Judging Team		
Jury President	Johannes Altner (GER)	
Judges	Ahmed Zulazfar Khan (SGP) Carole Majewski (FRA) Naoto Hakamada (JPN)	
Routesetting Teams		
Boulder	Tsukuru Hori (JPN), Head Routesetter Maelys Agrapart (FRA) Manuell Hassler (SUI) Max Ayrton (GBR)	
Lead	Akito Matsushima (JPN), Head Routesetter Ryan Sewell (USA) Yann Genoux (GBR) Jacopo Larcher (AUT)	
Para Climbing	Aaron Davis (USA), Head Routesetter Carlie LeBreton (AUS) Yoris Delahaye (FRA)	
Classification Team		
PI Classifiers	Sian Spencer (AUS), Head Classifier Daniel von Essen (GER)	

### 1.3. Local Organising Committee

Korea Alpine Federation – [kockaf@kaf.or.kr](mailto:kockaf@kaf.or.kr)

Event		
Event Director	Dongyoul Lee	<a href="mailto:2025seoul_wch_sport_event@kaf.or.kr">2025seoul_wch_sport_event@kaf.or.kr</a> +82-10-4874-5880
Administration and logistics		
	Jaesang Lee	<a href="mailto:2025seoul_wch_admin@kaf.or.kr">2025seoul_wch_admin@kaf.or.kr</a> +82-10-3143-2208
	Hyunsuk Cha	<a href="mailto:2025seoul_wch_admin@kaf.or.kr">2025seoul_wch_admin@kaf.or.kr</a> +82-10-3104-6651
Media and Communications		
	Hyeyoung Yoon	<a href="mailto:2025seoul_wch_media_tv@kaf.or.kr">2025seoul_wch_media_tv@kaf.or.kr</a> +82-10-8534-1408



## 2. REGISTRATION DEADLINE

Member Federations may register eligible Team Members in the following numbers and capacity:

A) Team Officials

- 1) One (1) Team Manager;
- 2) Two (2) coaches per Discipline;
- 3) Two (2) qualified medical or para-medical personnel, and
- 4) One (1) designated Sight Guide Assistant to each competitor registered in a Para sport class
- 5) One (1) designated Athlete Assistant to each competitor registered in a Para Sport Class.

B) Competitors:

Follow the IFSC quota table available on IFSC website [here](https://ifsc.results.info/users/login).

**IFSC Online Registration System:** <https://ifsc.results.info/users/login>.

Events	Deadline	Notes
<b>Climbing</b> Athletes registered in Speed, Boulder, Lead events	<b>Thursday 21 August 2025 23:59 UTC+0.</b>	Following the Registration Date and until <b>6 September 2025 at 23:59 UTC+0</b> , Member Federations may, in exceptional circumstances, withdraw Team Members and substitute new Team Members to replace those withdrawn, provided that any substitute competitors must be registered in the same Discipline and Category as the withdrawn competitor.
<b>Para Climbing</b> Para Athletes registered in the Para Climbing event, in all IFSC Sport Classes	<b>Saturday 9 August 2025 23:59 UTC+0.</b>	Following the Registration Date and until <b>6 September 2025 at 23:59 UTC+0</b> , Member Federations may replace Team Officials, Aides, and Sight Guides. Athlete replacement does not apply to Para Climbing registrations. The request of replacement shall be communicated to the IFSC office.



## 3. VALID ATHLETES INTERNATIONAL LICENCE

**Licences:** Only competitors and team officials with a valid IFSC international licence are allowed to register for the competition.

**IMPORTANT:** In order to have a valid IFSC Athletes International Licence, the required medical data as per IFSC Relative Energy Deficiency in Sports (REDs) Health Screening Rules ([here](#)) shall be properly submitted and completed. Competitors with Medical Data status as “Data Missing” or “Review Required” **will be deleted** from the Registration List.

## 4. VISA AND TRAVEL

For visa invitation letter please contact Mr. Samuel Jaesang Lee | [2025seoul\\_wch\\_admin@kaf.or.kr](mailto:2025seoul_wch_admin@kaf.or.kr); [kockaf@kaf.or.kr](mailto:kockaf@kaf.or.kr)

We need the following information from all team members to send you an invitation letter. Please send the information of all team members together in one table, looking like the following example. Please do not forget to attach a scanned copy of the passport.

<i>Name (First/Last)</i>	<i>Date of birth</i>	<i>Nationality</i>	<i>Passport Number</i>	<i>Expiration date</i>	<i>Position</i>

## 5. COMPETITION VENUE

### Qualification: Haneol Plaza

424 Olympic-ro, Songpa District, Seoul, Korea  
Located in Olympic Park (In front of KSPO DOME)



### Semi Finals and Finals: KSPO DOME

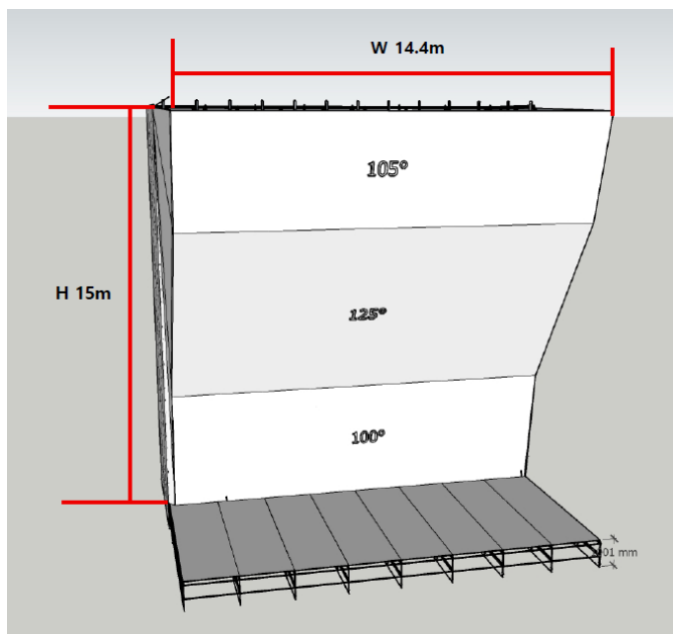
424 Olympic-ro, Songpa District, Seoul  
Located in Olympic Park



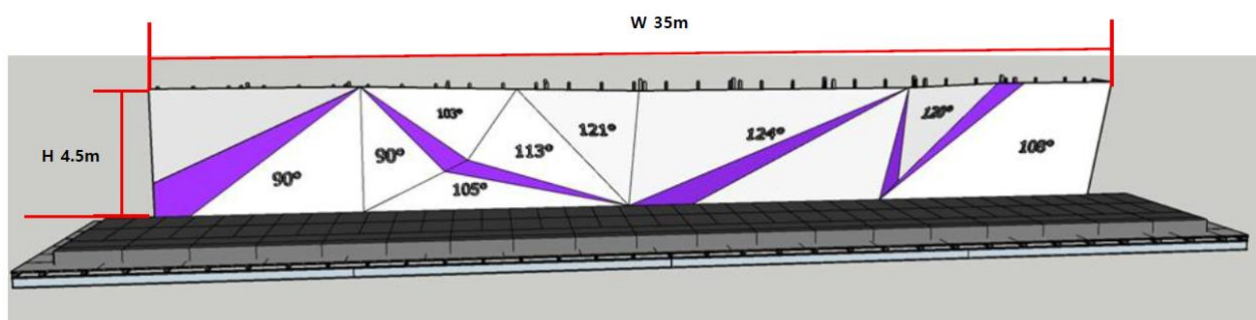


## 6. WALLS PROFILES

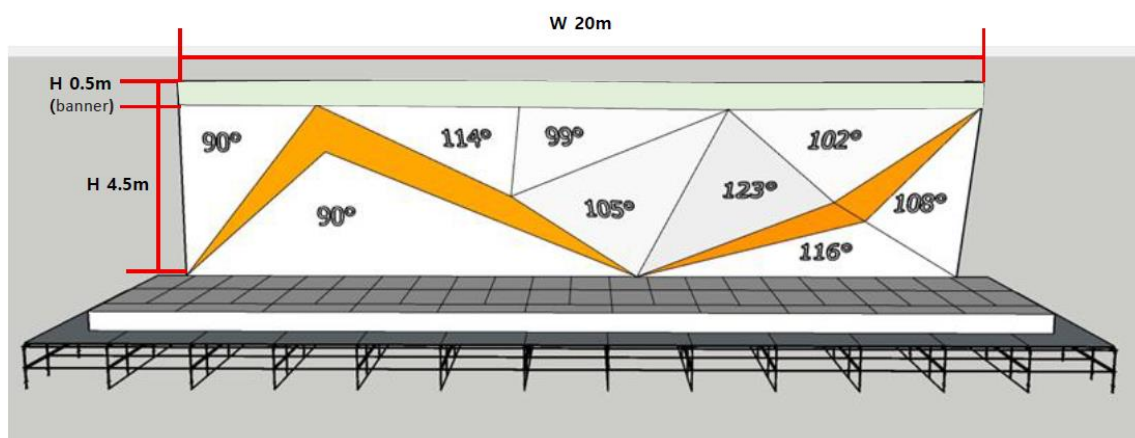
### 6.1. Lead wall – same profile for the outdoor and indoor wall



### 6.2. Boulder wall – outdoor (Qualifications)



### 6.3. Boulder wall – indoor (Semi-Finals and Finals)



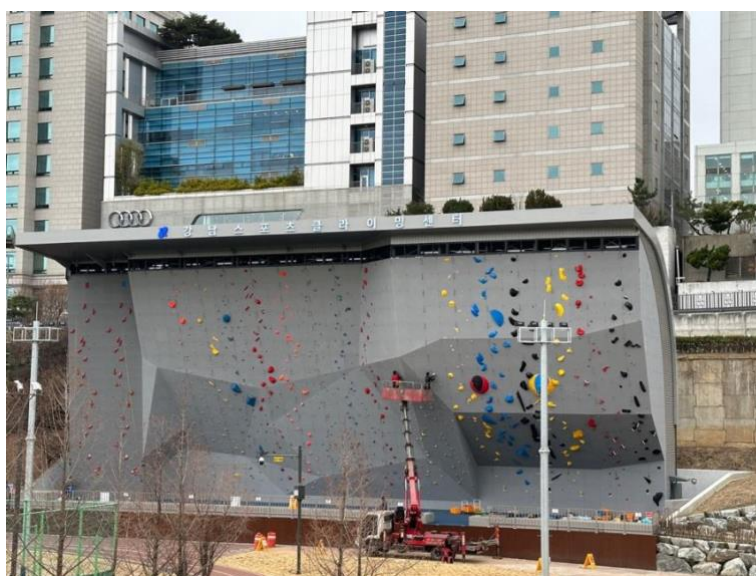
## 7. TRAINING POSSIBILITIES

Teams can use the following facility to train:

### **Gangnam Sports Climbing Center**

20-30, Yeoksam-ro 107-gil, Gangnam-gu, Seoul, Republic of Korea (06177).

The climbing centre is **reserved from 15 to 28 September for athletes attending the World Championships**.  
Entry fees: 3000 KRW/person, payable only with cash.



## 8. HEALTHCARE INFORMATION

During the competition days, two ambulances will be always available. The team will be composed by two doctors and two emergency assistants

### **Emergency Numbers South Korea:**

Fire Department & Ambulance: 119

Police: 112

Medical Emergencies: 1339

Foreign Traveler Emergencies: 1330

### **Nearest Hospital:**

Asan Medical Center

88 Olympic-ro 43-gil, Songpa District, Seoul

Tel: +82-2-1688-7575

More Information: <https://www.amc.seoul.kr/asan/main.do>





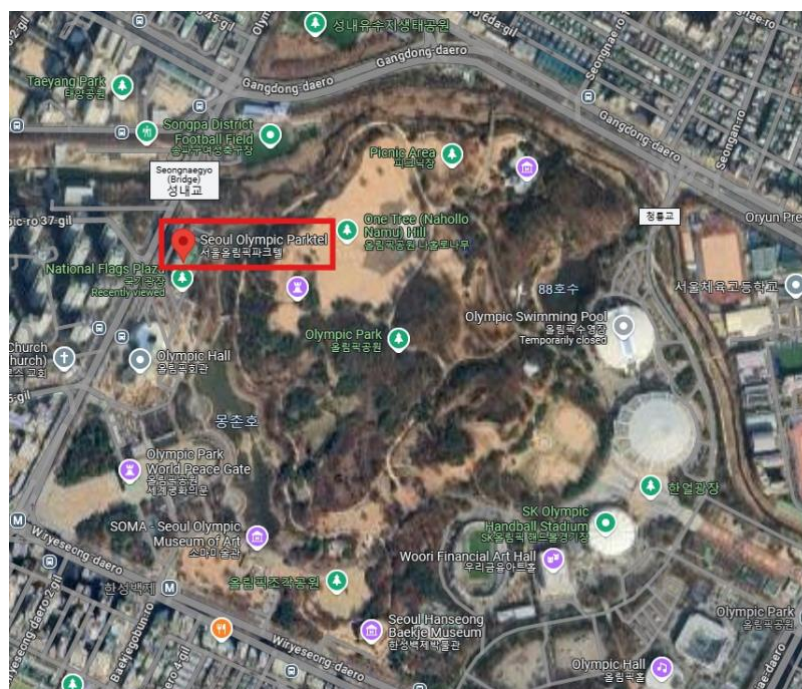
## 9. PHYSICAL IMPAIRMENT CLASSIFICATION

The IFSC is pleased to confirm that Physical Impairment (PI) Classification will be available at the World Championships thanks to the efforts and support of the IFSC and the Korean Paralympic Committee (KPC).

Date	Activity	Location
<b>18 September</b> All day	Athlete Evaluation (in-room)	Facility of the <b>Korean Paralympic Committee</b> , 5-min walk from Olympic Parktel. The KPC Office (same building as KSOC): <a href="https://maps.app.goo.gl/PoSWuAJphbQwLYNM6">https://maps.app.goo.gl/PoSWuAJphbQwLYNM6</a> 424 Olympic-ro, Songpa District, Seoul
<b>19 September</b> Morning	Sport Specific Tests	<b>Gangnam Sports Climbing Center</b> 20-30, Yeoksam-ro 107-gil, Gangnam-gu, Seoul  KPC will provide transportation from Olympic Parktel to the Gangnam Sports Climbing Center for athletes who have to undergo Sport Specific Test.  Athletes who lodge in other hotels may meet at the given time at the Olympic Parktel or reach the Sport Specific Test facility with their own means. This will be agreed onsite between IFSC and the relevant Team(s).

The detailed classification schedule is published on the [IFSC website here](#).

## 10. TECHNICAL MEETING



Venue for all Technical Meetings is approximately 20-minute walk from the climbing venue.

### Seoul Olympic Parktel, Berlin Hall

448 Olympic-ro, Songpa District, Seoul

**IMPORTANT:** Please note that a maximum of two (2) National Team Officials per Country will be allowed to access the Technical Meeting.

## 11. CONFIRMATION OF ATTENDANCE

### Seoul Olympic Parktel, Berlin Hall

448 Olympic-ro, Songpa District, Seoul

**Confirmation attendance is mandatory** for each discipline and must be done in person by the Head of Delegation. In case a National Team did not register the Head of Delegation, another member of the National Team shall be appointed to confirm attendance of the Team.

In case of emergencies and late arrival the Event Delegate must be informed immediately. Failure to provide this information in a timely manner may result in the athletes not being permitted to compete.

Digital copy of athletes' passports shall be provided at the confirmation of attendance.

**IMPORTANT:** Confirmation of attendance for each discipline is outlined in the event programme below. Athletes may only be confirmed in the discipline for which the confirmation is taking place, provided they are duly registered in that discipline. It will not be possible to confirm athletes for other disciplines during a different confirmation session.

## 12. PROVISIONAL PROGRAMME (LOCAL TIME, UTC +9)

Thursday 18 September	
9.00 – 17.00	<b>Para Climbing PI Classification</b> Korean Paralympic Committee 424 Olympic-ro, Songpa District, Seoul
Friday 19 September	
9.00 – 12.00	<b>Para Climbing PI Classification – Sport Specific Test</b> Gangnam Sports Climbing Center 20-30, Yeoksam-ro 107-gil, Gangnam-gu, Seoul
14.00 – 16.00	Confirmation of attendance Para Climbing (Olympic Parktel Hotel)
16.30	<b>Technical Meeting Para Climbing: Olympic Parktel Hotel, Berlin Hall</b>
Saturday 20 September	
07.00 – 08.00	Warm up opening-closing
09.00 – 15.00	<b>Women's and Men's Para Climbing Qualifications</b>
Sunday 21 September	
07.00 – 08.00	Warm up opening-closing
08.00 – 10.00	Health and Safety Screenings for Women's and Men's Lead
09.00 – 15.00	<b>Women's and Men's Para Climbing Qualifications</b>
16.00 – 18.00	Confirmation of attendance Lead (Olympic Parktel Hotel)
17.00 – 18.30	IFSC Medical Meeting – open to all Teams' medical doctors and physios
18.30	<b>Technical Meeting Lead: Olympic Parktel Hotel, Berlin Hall</b>
Monday 22 September	
07.00 – 11.00	Health and Safety Screenings for Women's and Men's Boulder
07.00 – 08.00	Warm-up opening – closing
09.00 – 16.30	<b>Women's and Men's Lead Qualifications</b>
14.30 - 17.00	Confirmation of attendance Boulder (Olympic Parktel Hotel)
15.30 – 17.00	Athletes' Forum (Olympic Parktel Hotel, Berlin Hall)
17.00 – 18.00	Anti-doping education seminar (Olympic Parktel Hotel, Berlin Hall)
18.00	<b>Technical Meeting Boulder: Olympic Parktel Hotel, Berlin Hall</b>
Tuesday 23 September	
07.00 – 09.00	Health and Safety Screenings
07.00 – 08.00	Isolation opening – closing
09.00 – 14.00	<b>Men's Boulder Qualifications</b>
14.00 – 15.00	Isolation opening – closing
16.00 – 20.00	<b>Women's Boulder Qualification</b>
15.30 – 17.30	Confirmation of attendance Speed (Olympic Parktel Hotel)
18.00	<b>Technical Meeting Speed: Olympic Parktel, Berlin Hall</b>



## INTERNATIONAL FEDERATION OF SPORT CLIMBING

Wednesday 24 September	
07.00 – 09.00	Health and Safety Screenings
07.00 – 08.00	Warm-up opening -closing
09.00 – 11.30	<b>Women's Speed Practice + Qualifications</b>
11.30 – 12.30	Isolation opening – closing
13.30 – 16.00	<b>Women's and Men's Para Climbing Finals</b>
16.00 – 17.00	Awarding ceremony
18.00 – 19.00	Warm-up opening – closing
20.00 – 21.00	<b>Women's Speed Finals</b>
Following	Awarding ceremony
Following	2025 IFSC World Cup season awards (Boulder, Speed, and Lead), presented by EuroHolds
Thursday 25 September	
07.00	Warm-up opening – closing
09.00 – 12.30	<b>Men's Speed Practice + Qualifications</b>
11.30 – 12.30	Isolation opening – closing
13.30 – 16.00	<b>Women's and Men's Para Climbing Finals</b>
16.00 – 17.00	Awarding ceremony
18.00 – 19.00	Warm-up opening – closing
20.00 – 21.00	<b>Men's Speed Finals</b>
Following	Awarding ceremony
Friday 26 September	
08.00 – 09.00	Isolation opening – closing
10.00 – 12.30	<b>Women's and Men's Lead Semi-Finals</b>
17.00 – 18.00	Isolation opening – closing
19.00 – 21.00	<b>Women's and Men's Lead Finals</b>
Following	Awarding ceremony
Saturday 27 September	
08.00 – 09.00	Isolation opening – closing
10.00 – 12.30	<b>Women's Boulder Semi-Finals</b>
17.00 – 18.00	Isolation opening – closing
19.00 – 21.00	<b>Women's Boulder Finals</b>
Following	Awarding ceremony
Sunday 28 September	
08.00 – 09.00	Isolation opening – closing
10.00 – 12.30	<b>Men's Boulder Semi-Finals</b>
17.00 – 18.00	Isolation opening – closing
19.00 – 21.00	<b>Men's Boulder Finals</b>
Following	Awarding ceremony



### 13. CONTINGENCY PLANS

All athletes and National Teams are required to remain in Seoul from the technical meeting of their respective discipline until the finals. In case of severe contingencies (e.g., adverse weather conditions), qualification rounds may be postponed to subsequent days. However, the schedule for Semi-Finals and Finals is fixed and will not be changed.

### 14. ADDITIONAL PROGRAMME ACTIVITIES

#### 14.1. Anti-Doping Seminar

The IFSC firmly believes that athletes' initial engagement with anti-doping should occur through comprehensive education rather than testing. Athletes enter the sport with a clean record, and it is the responsibility of sporting organisations to equip them with the knowledge and guidance necessary to uphold the principles of clean sport throughout their careers.

As part of IFSC Anti-doping education plan, the IFSC invites athletes and coaches to take part to 2-day activities aimed at promoting clean sport in youth athletes.

The activities will include a 60-minute presentation (22 September at 17:00 – Olympic Parktel Hotel, Berlin Hall) and an education booth over the following day (23 September). All activities are delivered by ITA Education Ambassador.

#### 14.2. Athletes' Forum

The IFSC together with the Athletes Commission will host an Athletes' Forum during the Climbing and Para Climbing World Championships, providing a space for athletes to share their views, ask questions, and engage in open dialogue. This is an important opportunity for athletes to contribute to the development of the sport and voice their perspectives. Details on the specific topics will be communicated to athletes in advance.

#### 14.3. IFSC World Cups awards

The IFSC awarding ceremony for the podium of the 2025 IFSC World Cup rankings, presented by EuroHolds, will take place during the 2025 IFSC World Championships. The schedule is outlined above, and the relevant athletes are required to attend.





## 15. PRIZE MONEY

For Athletes competing in Boulder, Lead, and Speed disciplines, prize money will be allocated as follows. The amount below represents the NET amount received by the athletes of Boulder, Lead, and Speed.

<i>Rank</i>	<i>NET prize money</i>
1st	7,380 €
2nd	4,920 €
3rd	3,444 €
4th	2,460 €
5th	1,968 €
6th	1,722 €
7th	1,476 €
8th	1,230 €

For Para Climbing, the Local Organising Committee will pursue its best effort to reward prize money for the event.

## 16. TICKETS

Tickets will be needed for the following events (All indoor events):

- Speed Finals - Women
- Speed Finals - Men
- Para Finals
- Lead Semi-finals & Finals Women & Men
- Boulder Semi-finals & Finals Women
- Boulder Semi-finals & Finals Men

Purchase Link: <https://triple.global/en> (Tickets>Sports), the sales will start on 31 July 2025 at 14:00 UTC+9

Registered IFSC athletes and team officials will not need to purchase tickets for these events. However, please note that accreditation is required for all indoor rounds. For Qualification events, held outdoor, event accreditation will not be needed. Please be aware that access to the venue is limited due to capacity restrictions and will be managed on a first-come, first-served basis.



## 17. ACCOMMODATION

### 17.1. Suggested hotels

Please access the following link to check the list of available hotels. Reservations can be made directly through the link. <https://2025ifsc.mice.link/>

For any inquiries or requests regarding additional accommodation options, please contact the email address listed on the page: [ifsc\\_sit@nol-universe.com](mailto:ifsc_sit@nol-universe.com)

### 17.2. Seoul Olympic Parktel – **SOLD OUT**

Address: 448 Olympic-ro, Songpa District, Seoul

Telephone No. : +82-2-410-2114

More information: <http://www.parktel.co.kr/>

When contacting the hotel, please mention your participation to the 2025 IFSC World Championships

### 17.3. Hotel Samjung

Address: 604-11, Yeoksam-dong, Gangnam-gu

Telephone: +82-2-557-1221, email: [reserve@samjunghotel.co.kr](mailto:reserve@samjunghotel.co.kr)

When contacting the hotel, please mention your participation to the 2025 IFSC World Championships

## 18. TRANSPORT

The hotels included in the list above are located in a range between 5 to 10 kilometres to the climbing venue. Seoul Olympic Parktel is 20 minutes walking distance to the venue.

## 19. TRAVEL INFORMATION

### 19.1. By Bus

Incheon International Airport

Distance to competition area: approx. 80 km.

From the airport, take Airport Limousine Bus No.6200 to Olympic Hall. Then, walk for about 3 minutes to the Seoul Olympic Parktel.

For further information please check: <https://www.seoulairportbus.com/>

### 19.2. By Subway

From Incheon International Airport Terminal 1 or 2, take Airport Railroad (AREX) to Gimpo International Airport Station. Transfer to Seoul Subway Line 9(Brown Line) and take the subway towards VHS Medical Center. Transfer to Seoul Subway line 8(Pink Line) and take the subway towards Moran. Get off at Mongchontoseong Station and go to exit no.1. Walk about 3 minutes to Seoul Olympic Parktel.

Incheon Int'l Airport Railway 1599-7788

For further information please check: [www.arex.or.kr](http://www.arex.or.kr)

## 20. ADDITIONAL RANKING INFORMATION

For the avoidance of doubts, the B&L discipline will not be held at the 2025 IFSC World Championships and, consequently, no B&L ranking will be generated after the event

The 2025 IFSC World Championships is one of the qualification events for the Asian Games 2026. All the details are outlined in the [Qualification System](#).