



WORLD CLIMBING SERIES INNSBRUCK 2026

BOULDER / LEAD

AUSTRIA

17-21 JUNE

ORGANISED BY



Version 1.0
09/04/2026





**WORLD
CLIMBING**

- 1. Organisation**
- 2. Programme**
- 3. Deadlines and quotas**
- 4. Sport information**
- 5. Logistics**
- 6. Medical information**



1. Organisation

1.1. World Climbing Staff on site

Staff		
Role	Name	Info
Media Manager	Richard Aspland	richard.aspland@worldclimbing.com

1.2. World Climbing Officials

Delegates		
Event Delegate	Christophe Billon (FRA)	christophe.billon@worldclimbing.com +336 16 41 46 64
Event Assistant Delegate	Daniel Serman (CHI)	
Judging Team		
Jury President	Karalyn Aronow (USA)	
Judge	François Léonardon (FRA)	
Route Setting Teams		
Head Route Setter Boulder	Gen Hirashima (JPN)	
Route Setter Boulder	Anna Borella (ITA)	
Route Setter Boulder	Tomasz Oleksy (POL)	
Head Route Setter Lead	Adam Pustelnik (POL)	
Route Setter Lead	Helene Janicot (FRA)	
Route Setter Lead	Ma Zida (CHN)	

1.3. Local Organiser Committee

Event		
Event Director	Julia Pinggera	j.pinggera@austriaclimbing.com +43 6644387518

2. Programme

2.1. Provisional Programme (Local Time, UTC +2)

Tuesday 16 June	
7:00 – 10:00	Health and Safety Screening for Boulder
12:00 – 14:00	Confirmation of Attendance Boulder
15:00	Technical Meeting Boulder
Wednesday 17 June	
7:00 – 8:00	Isolation Open – Close Boulder Women Qualification
9:00 – 13:30	Women’s Boulder Qualification
13:30 – 14:30	Isolation Open – Close Boulder Men Qualification
15:30 – 21:00	Men’s Boulder Qualification
Thursday 18 June	
11:00 – 12:00	Isolation Open – Close Boulder Women Semi-Final
13:00 – 15:30	Women’s Boulder Semi- Final
17:30 – 18:30	Isolation Open – Close Boulder Women Final
19:20	Presentation & Observation Boulder Women Final
19:30 – 21:30	Women’s Boulder Final
Friday 19 June	
7:00 – 10:00	Health and Safety Screening for Lead
11:00 – 12:00	Isolation Open – Close Boulder Men Semi-Final
13:00 – 15:30	Men’s Boulder Semi- Final
14:30 – 16:30	Confirmation of Attendance Lead
17:30	Technical Meeting Lead
17:30 – 18:30	Isolation Open – Close Boulder Men Final
19:20	Presentation & Observation Boulder Men Final
19:30 – 21:30	Men’s Boulder Final
Saturday 20 June	
6:00	Warm-Up Open Lead Qualification
8:00 – 15:00	Men’s & Women’s Lead Qualification
17:30 – 18:30	Isolation Zone Open – Close Lead Semi-Final Men & Women
19:25	Observation Lead Semi-Final one after another
19:40 – 22:30	Men’s & Women’s Lead Semi-Final
Sunday 21 June	
17:30 – 18:30	Isolation Zone Open – Close Lead Final Men & Women
19:25	Presentation & Observation Lead Final
19:40 – 20:30	Men’s Lead Final
20:40 – 21:30	Women’s Lead Final

2.2. Technical Meeting

Location:

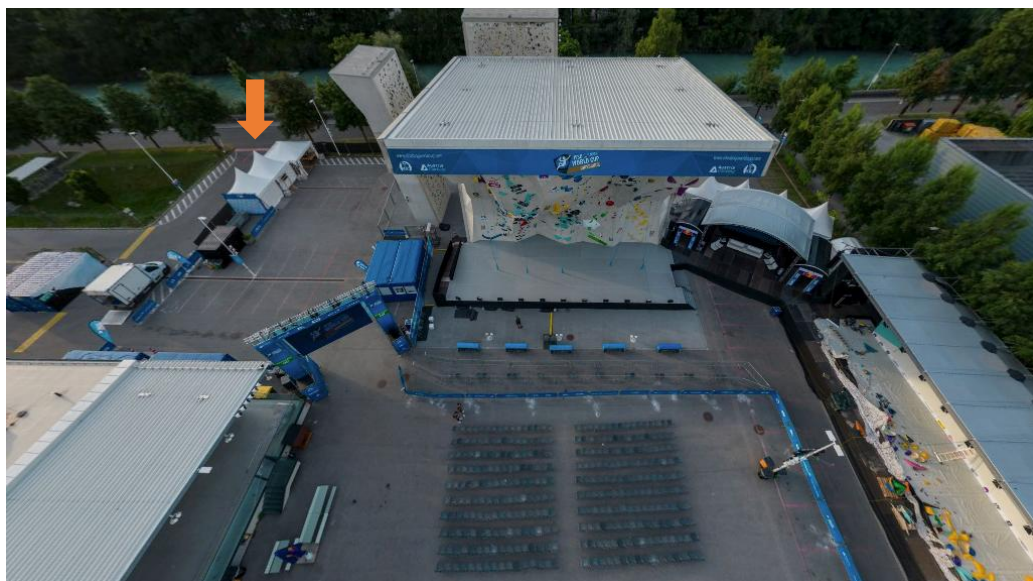
Tyrolean Association of the Deaf (orange on the map)
Ingenieur-Etzel-Straße 67 (7 minutes walk from the venue)



IMPORTANT: Please note that a maximum of two (2) National Team Officials per Country will be allowed to access the Technical Meeting.

2.3. Confirmation of Attendance

The confirmation of attendance takes place directly at the event venue (**Matthias-Schmid-Straße 12c, 6020 Innsbruck**), see orange arrow below:



Confirmation of attendance is mandatory and must be done in person by the Head of Delegation. In case a National Team did not register the Head of Delegation, another member of the National Team shall be appointed to confirm attendance of the Team. In case of emergencies and late arrival, the Event Delegate must be informed immediately. Failure to provide this information in a timely manner may result in the athletes not being permitted to compete. A digital copy of the athletes' passports shall be provided at the confirmation of attendance.

Even though the confirmation of attendance for Boulder and Lead takes place on separate days, the event accreditation for registered team members can be picked up on any day when the accreditation is open. Accreditation opening hours will be published on our [website](#). The accreditation gives you access to all events.

NOTE: If you pick up your accreditation for the event already before the designated registration time, your attendance is not confirmed automatically! You will still need to confirm your attendance during the above-mentioned registration time.

2.4. Health and Safety Screening

The Health and Safety Screening will take place at the seminar room at Kletterzentrum Innsbruck (Matthias-Schmid-Straße 12c, 6020 Innsbruck). Meeting point for all assigned athletes will be:

Date	Time		Meeting Point
Tuesday 16 June	7:00 – 10:00	Health and Safety Screening for Boulder	Isolation Zone "Check-In" Desk
Friday 19 June	7:00 – 10:00	Health and Safety Screening for Lead	Isolation Zone "Check-In" Desk

3. Deadlines and quotas

3.1. Registration deadline

The deadline for registration is 15 days before the first day of competition on **June 2nd at 11.59PM UTC+0**
This deadline is valid for both Boulder and Lead Series.

3.2. Valid athletes' international licence

Only competitors and team officials with a valid World Climbing international license and approved medical status are allowed to register for the competition.

Online Registration System: <https://ifsc.results.info/users/login>

4. Sport Information

4.1. Venue information

Kletterzentrum Innsbruck:

Matthias-Schmid-Straße 12c

6020 Innsbruck, AUSTRIA

<https://www.kletterzentrum-innsbruck.at/>



4.2. Training Possibilities

Some areas of Kletterzentrum Innsbruck will be closed or restricted in the weeks leading up to the event, due to route setting and construction work for the World Climbing Series Innsbruck. As last year, we guarantee some time slots where training in the National Training Center Areas of Kletterzentrum Innsbruck (steep part of the Lead Indoor & Boulder 1st floor) is possible, after paying the usual entrance fee of Kletterzentrum Innsbruck.

A detailed plan of the closures and restrictions will be published here in the upcoming days:

<https://www.worldclimbingseries.com/participants-information/>.

Here are some other training possibilities within 1 hour drive from Innsbruck:

- Kletterzentrum Imst (mainly Lead)
- Steinblock Imst (Boulder)
- Bergstation Telfs (mainly Boulder)
- Vertikale Kletterzentrum Brixen, Italy (all disciplines)

4.3. Prize Money

Rank	MEN Boulder	WOMEN Boulder	MEN Lead	WOMEN Lead
1st	6000€	6000€	6000€	6000€
2nd	4000€	4000€	4000€	4000€
3rd	2800€	2800€	2800€	2800€
4th	2000€	2000€	2000€	2000€
5th	1600€	1600€	1600€	1600€
6th	1400€	1400€	1400€	1400€
7th	1200€	1200€	1200€	1200€
8th	1000€	1000€	1000€	1000€
TOTAL	20000€	20000€	20000€	20000€

The prize money will be distributed to the athletes NET of any National taxes

5. Logistics

5.1. Visa and Travels

If you need invitations for Visa, please contact Ms. Valentina Ratz | v.ratz@austriaclimbing.com

Please provide the following information of all team members together in one table and also attach a scanned copy of the corresponding passport(s).

Name (First/Last)	Date of birth	Place of Birth	Nationality	Passport Number	Expiration date	Position

5.2. Accommodation

5.2.1. Suggested hotels:

For booking requests and information about accommodation in Innsbruck, please contact:

Innsbruck Tourist Information

Burggraben 3, A-6020 Innsbruck

Phone: +435125356

Mail: office@innsbruck.info

Web: www.innsbruck.info/en/

Here are some recommended hotels in different price classes with good public transport or in walking distance to the venue:

- [Austria Trend Hotel Congress Innsbruck](#)

20min walk to the venue or Bus 540 to Wohnheim Saggen

- [Hotel Leipziger Hof](#)

Tram 2 or 5 from Leipziger Platz to Radetzkystraße

- [Motel One](#) (Main Station Innsbruck)

Tram 5 to Radetzkystraße or Bus R to Messe Bahnhof or Bus 540 to Wohnheim Saggen

- [Meininger Innsbruck Centre](#)

Bus R from Klinik / Universität to Messe Bahnhof or Tram 2 or 5 to Radetzkystraße

- [AC Marriott](#)

Tram 5 from Triumphpforte/Casino to Radetzkystraße or Bus R to Messe Bahnhof

- [Basic Hotel](#)

Tram 1 from Terminal/Marktplatz to Haydnplatz or Bundesbahndirektion

- [Adlers Hotel & Rooftop](#)

25min walk to the venue or Bus 540 from Hauptbahnhof to Wohnheim Saggen

- [Jugendherberge Innsbruck \(Youth Hostel\)](#)

10min walk to the venue

5.3. Travel information – Getting to Innsbruck

By plane:

- Airport Innsbruck

Distance to competition venue: approx. 5 km.

For connections please check: <https://www.innsbruck-airport.com/en>

- Airport Munich

Distance to competition area: approx. 200 km.

From the airport take the “S-Bahn” to train station “Munich East”, then go by train to Innsbruck.

For further information please check: <https://www.munich-airport.de>

By train:

Innsbruck central railway station offers direct connection to almost all major European cities. All trains make a stop in Innsbruck. National and international trains may be booked through:

- [OBB]: <http://www.oebb.at/en/>
- Deutsche Bahn: <https://www.bahn.de/en/view/index.shtml>

By car:

<https://goo.gl/maps/NgbSjoMBqKsTNbjE7>

5.4. Travel information – (Public) Transport in Innsbruck

There are **no parking space** available for teams or spectators at Kletterzentrum Innsbruck during the event or in the days / weeks leading up to the event. Please consider public transport for your travel to the venue and back.

IMPORTANT: You can use your accreditation badge as a ticket for public transportation in Innsbruck from June 15 – 21. This includes all bus and tram lines within the core zone, except “The Sightseer”. Please note the imprint on your accreditation badge.

Closest Public Transport Stops and Lines:

Several bus and tram lines stop just a few minutes' walk away:

- Bus line T - bus stop "Sebastian-Scheel-Straße" (approx. 5 minutes on foot)
- Bus line 540 - stop "Wohnheim Saggen" (approx. 3 minutes on foot)
- Bus line R - bus stop "Messe Bahnhof" (approx. 10 minutes on foot)
- Tram line 1 - bus stop "Bundesbahndirektion" (approx. 10 minutes on foot)
- Tram line 2 or line 5 - bus stop "Radetzkystraße" (approx. 8 minutes on foot, crossing the bridge east of the gym)

Further, there is a railway station within a 10 minute walk from the venue. "Messe Bahnhof" has local train connections. The main station “Innsbruck Hauptbahnhof” is 30 minutes away from the venue.

Information on bus and tram lines and their departures can be found :

- [IVB Online](#)
- [Google Maps](#)
- [Wegfinder](#)

Rental Bikes via the App “Next Bike”

One alternative is to come by bike, e.g. you can use the IVB Stadtrad (city bike). Bicycle racks are available directly at the venue and there are other locations all over the city where you can take them / give them back. Further information:

<https://stadtrad.ivb.at/en>

5.5. Tickets

Tickets will be needed for the following events:

- Boulder Finals Women
- Boulder Finals Men
- Lead Semifinals Women & Men
- Lead Finals Women & Men

All other events are free of charge, but access to the venue is limited for all people without a World Climbing Series Innsbruck accreditation (first come, first serve). The sale for single day tickets starts on 20th of April. Further Information can be found here: <https://www.worldclimbingseries.com/tickets/>



6. Medical information

6.1. General information

Emergency local doctor during the event: The medical team will be on-site from the opening of the isolation zone until the end of the final competition. In addition to the emergency doctor, there will be a team of paramedics at the venue during the competition.

Emergency Numbers:

Fire Department: 122

Ambulance: 144

Euro Emergency Call: 112

Police: 133

Nearest Hospital:

Landeskrankenhaus Innsbruck, Innrain 35, 6020 Austria